

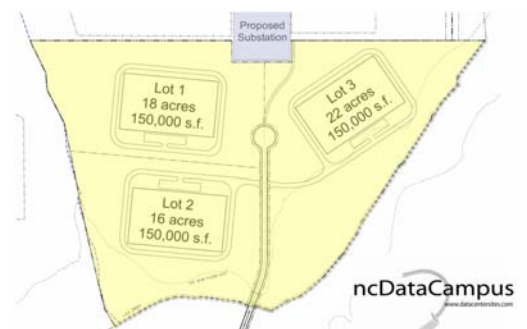
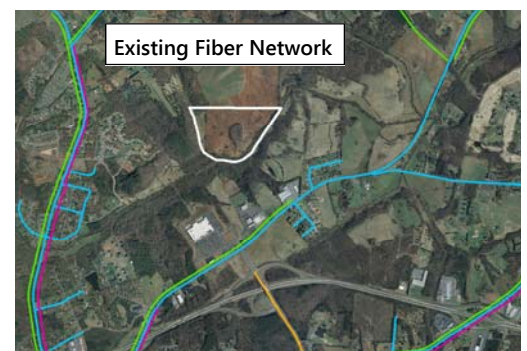
- Home of Apple's eastern US facilities and green energy campuses
- NC Data Center Corridor home to nearby data centers for Facebook, Google, Wipro, EMC, Time Warner Cable, AT&T, & Disney
- Low Cost, Reliable and Redundant Electricity provided by Duke Energy
- North Carolina Incentives Available
- Low Cost/Abundant Water (up to 12mgd available capacity)
- Low Cost and Reliable Fiber and Network Infrastructure by multiple providers (AT&T/ Charter Business/Duke Net/others)
- Insulated from Natural or Manmade Disasters such as tornadoes, hurricanes & terrorist attacks
- Extensive Training Assistance from the NC Community College System including NSA Certification and Certified Network Engineer programs
- Home of the Largest Fiber Optic Training Facility in the US
- Catawba County is within one hour of two of top ten least expensive cities to operate a data center, as rated by The Boyd Company Inc., (Winston-Salem, NC and Charlotte, NC.)
- Fast Track Local Permitting available
- Population of over 779,000 within a 45-minute drive time including a labor force of over 395,000
- Within 45 minutes of the Charlotte Douglas International Airport
- Metro Area ranked #1 in the US for Cost of Doing Business by Forbes.com in 2017 (no lower than 6th since 2006)
- Inc. ranked Hickory among its 6 cheapest US cities in which to start a business
- National Geographic ranked Hickory in the top 30 best small cities in the US



**North
Carolina
Data Center Corridor**



- Duke Energy 100kV dual circuit and 44 kV single circuit lines adjacent to site
- Substation on-site; additional 100 / 12.5 kV Substation within 1.5 miles
- Dual Service Fiber Optics available at the site by multiple providers (AT&T/Charter/Broadplex)
- Designated as an AT&T Fiber Ready site
- 12" looped water line adjacent to site with average flow of 1000 gpm
- Municipal water system with 3.0 mgd capacity; excess capacity of 1.3 mgd
- 0.75 miles to I-40; 22 miles to I-77; 34 miles to I-85
- 45 minutes to the Charlotte Douglas International Airport
- All due diligence completed; Competitively priced
- Fast Track Permitting available; zoned for Data Center use
- Scenic Property ideal for Corporate Campus or Single-Site
- Located outside of any flight paths; Over 2 miles from nearest rail line
- Controlled construction and permanent employee access with emergency egress



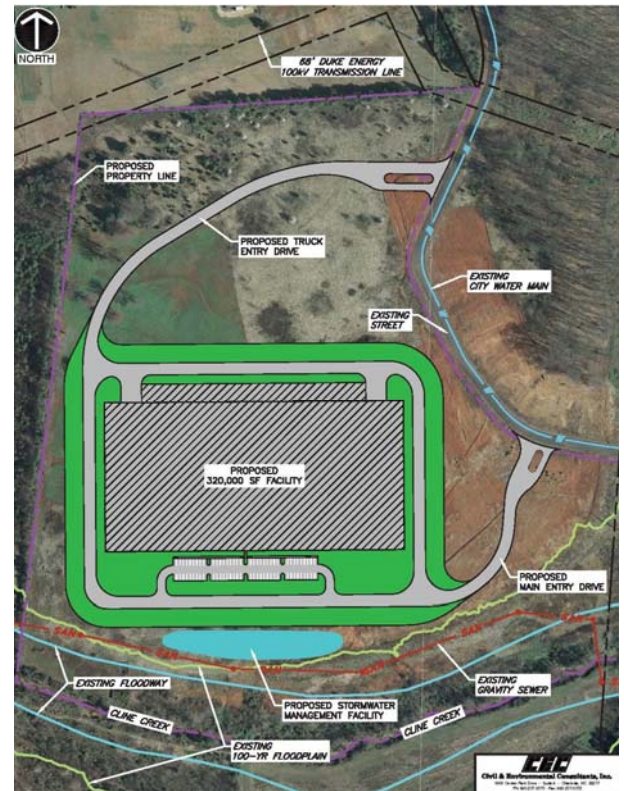
Conover Data Site



+/- 83 acres
Site can accommodate a
320,000 s.f. building



- Approximately 83 acres
- Duke Energy 100 kV dual circuit, 44 kV & 12.5 kV single circuit lines adjacent on site; additional 100/12.5 kV substation within 1.5 miles
- Dual service fiber optics available at the site by multiple providers (AT&T/Charter/ Broadplex)
- Multiple 12" water lines adjacent to site with average flow of 1000 gpm
- Municipal water system with 3.0 mgd capacity; currently using 1.3 mgd
- 3 miles from I-40; 22 miles from I-77
- 45 minutes from the Charlotte Douglas International Airport
- Utilities installed
- Dedicated paved city street through site (can be secured for single tenant user)
- Located outside of any flight paths
- Over 2 miles from nearest rail line



DataCenterSites.com

Tier 3+/4 Data Center Sites

You Have
Arrived
At Your
Destination.



CATAWBA EDC
CATAWBA COUNTY ECONOMIC DEVELOPMENT CORPORATION
www.catawbaedc.org

Forbes

Hickory, NC ranked

**#1 in the US for
Cost of Doing Business in 2017**

Top 6 from 2006-2016

The Catawba County Economic Development Corporation is committed to the recruitment of high wage, high growth industries, or what we consider Most Favored Businesses. We have identified data centers and mission critical facilities as a target market for our recruitment efforts and we are committed to site development for these industries.

Catawba County is ideally suited for the location of data centers due to abundant, low cost and reliable electricity, water and fiber, not to mention a location that insulates us from disasters. In fact, the locations of Apple and Bed Bath and Beyond to our county prove that our area is attractive to data centers.

We have anticipated the needs of the data center industry and are working daily to make Catawba County one of the best places in the country to locate data centers and mission critical facilities.

Scott Millar
Catawba County EDC President
smillar@catawbacountync.gov
828-244-2993 (cell)

Local Fiber Optics Manufacturers are Willing Partners

Three industry leaders in telecom manufacturing, **CommScope**, **Corning Cable Systems** and **Prysmian** have called Catawba County, North Carolina home for over 20 years. Collectively they employ over 4,000 people in 6 plants countywide.

CommScope, the world's largest manufacturer of coaxial cable for Hybrid Fiber Coaxial (HFC) networks, is a global leader in infrastructure solutions for communications networks.

Corning Cable Systems has the largest fiber installation training facility in the United States in Catawba County.

They have committed to further the opportunity in this marketplace by providing value added services such as design engineering and access to the local high tech experience.

These cable industry leaders have a willingness to partner and have committed to assisting in the formation and growth of the data industry cluster in Catawba County.

COMMScope

CORNING

PRYSMIAN
CABLES & SYSTEMS



Catawba County EDC
828-267-1564

edc@catawbacountync.gov www.catawbaedc.org www.datacentersites.com